

The Most Luxurious Train in the World



ROVOS RAIL



FIRST-CLASS TRAVEL

Journeys of distinction on the Pride of Africa

Since its establishment in 1989, Rovos Rail has earned an international reputation for its truly world-class travel experiences. Step aboard the wood-panelled coaches – classics remodelled and refurbished to mint condition – and sit back as some of the most varied scenery imaginable unfolds beyond the windows. With discreet and friendly service, five-star cuisine and a selection of South Africa's finest wines, Rovos Rail harks back to a simpler, more elegant era encompassing the timeless grace and high romance of African exploration. In a series of journeys lasting from 48 hours to 15 days, Rovos Rail links some of the sub-continent's greatest destinations. Join the regular three-day trip between Cape Town and Pretoria, the 55-hour game safari between Pretoria and Durban or the 72-hour meander between Pretoria and Victoria Falls. The annual journeys include the nine-day Golf Safaris

The Most Luxurious Train in the World

with optional excursions for non-playing guests; the nine-day Namibia Safaris connecting Pretoria, Kimberley, Etosha and the Kalahari with the Atlantic Ocean; the nine-day African Golf Collages (for golfers and non-golfers) running between Pretoria, Kruger Park, Durban and the Garden Route to Cape Town; and lastly the 15-day Dar es Salaam trips through South Africa, Botswana, Zimbabwe, Zambia and Tanzania – one of the most famous train journeys in the world. The trains, which may be hauled by diesel or electric locos, carry a maximum of 72 passengers in 36 superbly appointed suites and are also available for charter, while the Events Train caters for up to 250 guests and is suitable for daytime journeys. Pride of place in the Rovos stable goes to the historic and newly rebuilt station and loco yard, the heart and headquarters of this private railway company. Rovos Rail has also established three elegant seaside retreats in Cape Town that overlook the trendy and vibrant fishing villages of Kalk Bay and St James.

The Most Luxurious Train in the World





CAPE TOWN

Rediscover the old pioneering trail of the Karoo

JOURNEY AVAILABLE IN REVERSE

This 1 600-kilometre journey is a perfect illustration of South Africa as a world in one country. Travel the grasslands of the gold-rich Highveld to the haunting barrenness of the Great Karoo. Trundle through the spectacular mountain ranges and scenic winelands of the Cape. Journey's end is Cape Town, the Mother City of South Africa, cradled by the imposing bulk of Table Mountain, Devil's Peak and Lion's Head. Highlights of the north- and southbound routes include a visit to the historic village of Matjiesfontein; this authentic perfectly preserved Victorian Village – which was founded by Mr Logan as a refreshment stop in 1890 – also boasts an impressive museum on the platform. A stop is also made in Kimberley providing an opportunity to enjoy a city tour and a visit to the mine museum village and the world's largest man-made excavation, the Big Hole.

The Most Luxurious Train in the World



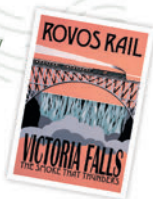
VICTORIA FALLS

See one of the natural wonders of the world

JOURNEY AVAILABLE IN REVERSE

This three-night adventure begins with the train's departure from Rovos Rail's gracious station in Pretoria. It then winds its way through Johannesburg and the goldfields of the Witwatersrand before travelling west alongside the Magaliesberg Mountains. After border formalities at Mafikeng, the train travels north the following day through Botswana's capital, Gaborone, crosses the Tropic of Capricorn and continues via Mahalapye and Francistown to the Zimbabwean border at Plumtree. The next morning we travel northwest towards Hwange Game Reserve stopping for an afternoon game drive. After an overnight stop at Thompsons Junction the sojourn ends at the incomparable Victoria Falls on the mighty Zambezi River. *Please note that depending on railways capacity this journey could be routed northwards through Beitbridge and Zimbabwe.*

The Most Luxurious Train in the World





DURBAN SAFARI

Journey into the heart of the African bushveld

JOURNEY AVAILABLE IN REVERSE



This three-day safari between Pretoria and Durban departs during the summer months and includes game drives, a battlefields tour with a world-class historian and a look at unusual African ceramics. Experience the Nambiti Conservancy – a Big Five private retreat set on 20 000 acres of malaria-free bushveld in KwaZulu-Natal. It has an incredible biodiversity including savannah, grasslands, thornveld and tall acacia trees. Situated on an expansive game farm, Spionkop Lodge – which adjoins an 11 000-acre nature reserve – is the perfect base for exploring the mountains, bush, birds and battlefields of the region. Ardmore Ceramics is a story about the Zulu people whose sense of rhythm, colour, dance and song, as well as the spirit of the African imagination, is exerting its influence on the other continents of the world. Visit this charming centre in the KwaZulu-Natal Midlands before travelling through the Valley of a Thousand Hills to Durban.

The Most Luxurious Train in the World

GOLF SAFARI

A kaleidoscope of golf and scenic beauty

Rovos Rail has designed a delightful nine-day safari to entertain the most discerning golfers with optional excursions for non-playing guests at all venues. Beginning in Pretoria, guests travel west to Sun City in the hills of the Pilanesberg for a day at this renowned facility including a game drive for non-golfers. In the foothills of the imposing Drakensberg Mountains, 18 holes await at Champagne Sports Resort with a battlefields tour a further highlight for non-golfers. Enjoy a game at Durban Country Club or tour the city. Then it's on to Zululand for game viewing at Hluhluwe before heading to Swaziland. Tee off at Royal Swazi or enjoy a game drive at Mkhaya and a visit to Ngwenya Glass Factory. Golfers then play the challenging Leopard Creek course (dependent) or enjoy a game drive in the world-famous Kruger Park, after which this memorable journey ends in Pretoria. See overleaf for African Golf Collage.

The Most Luxurious Train in the World





AFRICAN GOLF COLLAGE

A rich tapestry of landscape, game, history and culture

JOURNEY AVAILABLE IN REVERSE

This panoramic nine-day sojourn winds its way from Pretoria to Cape Town and includes a golfing and non-golfing itinerary. After a game drive in the Kruger Park, guests head to Zululand for game viewing at Hluhluwe. The train continues through the rolling hills of KwaZulu-Natal to Durban for a city tour and on to Ardmore Ceramics. Enjoy a tour of Bloemfontein then continue overnight to Port Elizabeth for a game drive in Addo Elephant Park. Then it's on to Oudtshoorn for an ostrich-farm visit followed by a spectacular rail descent to George. After visiting the natural paradise of Knysna, the train travels the scenic Garden Route to the Cape winelands for a visit to a brandy distillery before this magnificent expedition ends in Cape Town. Golfers will play Leopard Creek Kruger (dependent), Durban Country Club/Beachwood, Humewood Port Elizabeth, Fancourt and Ernie Els Oubaai George.

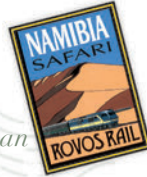


The Most Luxurious Train in the World

NAMIBIA SAFARI

An epic journey of discovery to the Atlantic Ocean

JOURNEY AVAILABLE IN REVERSE



This nine-day 3 400-kilometre journey takes the train from the savannahs of the Highveld to the Atlantic in the west. Departing from Pretoria, the first stop is Kimberley, centre of one of the world's famous diamond rushes where there is an opportunity to savour the 1870s atmosphere of the mining village. The train traverses the stark vistas of the Northern Cape to the Fish River Canyon, second in size to the Grand Canyon and truly a spectacular sight. Guests continue across the untamed beauty of the Kalahari Desert to Namibia's capital for a tour; Windhoek is a lively, cosmopolitan city with a strong German flavour. Then it's a short flight to the renowned Sossusvlei, a stunning pan in the Namib Desert, for an overnight stay followed by a night in the game-rich Etosha National Park. On the last morning, the train travels the Namib to the perfectly preserved 19th-century German Hansa town of Swakopmund – an unforgettable end to a remarkable journey.

The Most Luxurious Train in the World





DAR ES SALAAM

Embark on this authentic African adventure

JOURNEY AVAILABLE IN REVERSE

Several times a year this epic 15-day train journey travels through South Africa, Botswana, Zimbabwe, Zambia and Tanzania and is one of the most famous train journeys in the world. This magnificent sojourn begins in Cape Town, internationally known for the majestic beauty of Table Mountain. The subtle interplay of sea and mountain, which characterises the Cape of Good Hope, moved intrepid explorer Sir Francis Drake to call it 'the fairest Cape in all the circumferences of the globe.' The train traverses the Karoo arriving in Matjiesfontein for a brief visit to this authentic Victorian railway village and continues on to Kimberley where guests enjoy a city tour and a visit to the Diamond Mine Museum and the world's largest man-made excavation, the Big Hole. Then it's on to the capital city of Pretoria for a short excursion and a tour of Rovos Rail's station and museum followed by two nights in the big-five malaria-

The Most Luxurious Train in the World



free Madikwe Game Reserve, the fifth largest reserve in South Africa. The train continues through Botswana and into Zimbabwe arriving at the little station of Victoria Falls, first reached by railway in June 1904. Old colonial buildings, bougainvillea and palm trees against the backdrop of the Victoria Falls Hotel form a charming oasis of soft sweetness after the rugged dryness of the landscape. After guests enjoy an overnight stay at the Victoria Falls Hotel the train crosses the mighty Zambezi River, travelling northeast through Zambia, joining the Tazara Railway line at Kapiri Mposhe. Enjoy a bush walk at Chisimba Falls then continue the climb towards the Zambian/Tanzanian border, almost the midpoint between Africa's two Great Rift Valley lakes. Descend into the Rift Valley itself and witness spectacular scenery as the train negotiates the tunnels, switchbacks and viaducts of the escarpment. Early on the last day, the train passes through the Selous Game Reserve – the largest on the continent and a vision of timeless Africa – shortly before the bustling arrival in Dar es Salaam.

The Most Luxurious Train in the World





PRIVATE HIRE

Bespoke private and corporate train safaris

From the headquarters in Pretoria, successful charters from one to 10 days have been undertaken with incentive groups, historical tours, bird shoots and private family gatherings. Within reason, and subject to availability, the classic 42- or 72-bed train can go wherever there is a railway line in Southern Africa with many permutations. The newly rebuilt Events Train is an ideal venue for weddings, launches, conferences and private functions and can do a three-hour circular trip around Pretoria or a one-way journey to any destination within eight hours' rail-travel time from Pretoria. Only suitable for daytime journeys and depending on the number of guests, the Events Train can host – with full-bar facilities – a four-course sit-down dinner for up to 120 guests, a three-course sit-down meal for up to 240 guests in two sittings or, for 250 guests, hot snacks, canapés and cocktails served for the duration of the journey.

The Most Luxurious Train in the World

ROVOS RAIL STATION

The gracious and colonial-style headquarters

This rebuilt 60-acre property and once bustling hub of steam locomotion is now Rovos Rail's private railway station and serves as the departure or arrival point for most journeys. It boasts a small railway museum and, with other comprehensive facilities and additions, recreates the atmosphere of a fully fledged railway system and is intended to become the foremost working train museum in the world. The eyes of rail enthusiasts will be drawn to the vast carriage and locomotive sheds and the roofed workshop straddling 15 railway lines with concrete inspection pits – the ultimate maintenance facility where dedicated teams keep the rolling stock in perfect order. The low, red-bricked buildings alongside the new 300-metre platform house laundries, gleaming stainless-steel kitchens and well-stocked storerooms. This is the busy centre of a provisioning operation, which rivals that of a world-class hotel in terms of efficiency and attention to detail.

The Most Luxurious Train in the World





THE SUITES

Vintage carriages combine with modern luxuries

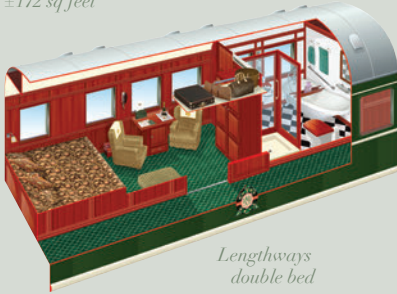
The epitome of luxury with handsome wood-panelling and period Edwardian features, the air-conditioned suites accommodate two people with the option of twin or double beds. The spacious suites offer passengers the opportunity to travel in privacy, comfort and luxury with fittings and facilities that are of the highest standard. All are equipped with a writing surface, a personal safe for valuables and a bar fridge filled with beverages of the passengers' choice with room service available 24 hours a day. In the en-suite bathrooms, original fittings combine with the modern technology of hot showers, hair-dryers and shaver plugs. Elegant and generous in size, the Royal Suites also feature a Victorian bath. The Pullman Suites are equipped with a comfortable sofa-seat during the day with a conversion to double or twin beds for the evening and also have an en-suite bathroom with shower, identical to that of the Deluxe Suites

The Most Luxurious Train in the World



ROYAL SUITES

± 16 sq metres
 ± 172 sq feet



*Lengthways
double bed*

*Mini-bar facilities, air-conditioning, luggage shelf,
writing desk, cupboards, safe and en-suite bathrooms
with toilet, bath* and shower: *Royal Suites only.*

DELUXE SUITES

± 10 sq metres
 ± 108 sq feet



*Lengthways
double bed*



*Crosswise
double bed*



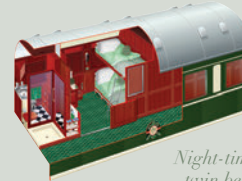
*L-Twin
beds*

PULLMAN SUITES

± 7 sq metres
 ± 76 sq feet



*Daytime
sofa couch*



*Night-time
twin beds*



*Night-time
double bed*

The Most Luxurious Train in the World



ST JAMES GUESTHOUSES

The most elegant retreats on the False Bay coast

St James, historically known as 'millionaire's mile', is making its comeback as one of the trendiest places to stay in Cape Town. This prestigious little stretch of the False Bay coastline – where the mountains meet the sea – is Mediterranean in style and a trove of novel antique shops, delis, sidewalk cafés, boutiques and art galleries. A mere five-minute walk away, fresh fish can be bought from the local fishermen and the harbour itself has charming restaurants offering home-style cuisine and fine-dining experiences. The area still boasts the colourful Victorian bathing boxes and grand old houses reflecting the splendour of the early gold- and diamond-mining era. Over the road are the famous tidal pools and beaches where an early morning swim is a favourite pastime. Perhaps the biggest attraction is the land-based whale watching; in season they appear literally metres from the shoreline.

Stately and Elegant Seaside Retreats



ST JAMES HOMESTEAD

An elegant and historic Cape Dutch house

Built in 1870, the Homestead was a simple thatch-roof dwelling originally owned by Mr Hablutzel and passed through several hands including the first Archbishop of Cape Town. It remained relatively unchanged until the 1940s when it was extensively remodelled, leaving us with the Cape Dutch style we see today. Under the ownership of Rovos Rail, the property has undergone a complete rebuild. The elegant Cape Dutch façade and conservatory is both striking in its contemporary feel yet in total harmony with the well-to-do suburb of St James. The property features a tiered back garden with a pool and viewing deck. The six sea-facing suites are a fusion of old-fashioned seaside charm and vibrant décor equipped with every modern convenience. The house has a well-equipped kitchen and laundry, an open-plan conservatory lounge and dining area, an upstairs sitting room with fireplace, computer facilities and a balcony with exceptional views.

Stately and Elegant Seaside Retreats



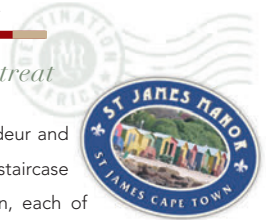


ST JAMES MANOR

A grand and stately seaside retreat

Built over 100 years ago, the Manor has an aura of grandeur and old-world charm with a magnificent wood-panelled staircase leading up to the five large suites and a standard twin, each of which bears the name of historic, local characters of St James. The individually decorated rooms reflect the opulent times of a bygone era with gorgeous floral fabrics and calm colours, Persian carpets and early English and South African antiques. The house has a number of attractive reception rooms for meetings, social gatherings and relaxation, a library, a bar and a breakfast room as well as an elegant dining room where, on request, dinners can be hosted. Breakfasts are a speciality offering a wide choice of interesting fare and are inclusive, as are all beverages. Carved into the mountain is a private and wind-protected swimming pool and tanning deck with views across the bay.

Stately and Elegant Seaside Retreats

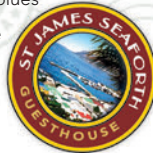


ST JAMES SEAFORTH

Modern with a casual elegance and sophistication

Seaforth, set above the coastal road, was originally built in 1877 as a four-bedroom thatch-roof home. Destroyed by fire in 1939 and rebuilt as a double-storey in 1940, the house has recently been refurbished to create a contemporary guesthouse with a casual but elegant atmosphere in keeping with its seaside village location. The three upstairs en-suite bedrooms are engaging and stylish as are the spacious downstairs facilities, which include a breakfast and dining room, a well-equipped kitchen, a study with computer facilities and a large lounge that flows onto the sizeable veranda, swimming pool and downstairs gym. The rooms are strewn with Arabic rugs, fashionable fabrics, antiques and handmade South African furniture. Rooms are furnished in soft cerise, greens and blues with original paintings by local artists such as Peter Jander and Eugene Marais. It is a stylish yet cosy family house and is ideal for family hire.

Stately and Elegant Seaside Retreats





11/2015

Begin a journey with Rovos Rail on the most luxurious train in the world and experience the extravagance of rail travel to Southern Africa's most spectacular destinations. The beautifully rebuilt trains carry a maximum of 72 passengers in 36 superbly appointed suites and are also available for charter, while the Events Train caters for up to 250 guests and is suitable for daytime journeys. Rovos Rail has also established three stately seaside retreats in St James, Cape Town.

ROVOS RAIL HEAD OFFICE

1 TRANSNET AVE, PRETORIA • PO BOX 2837 PRETORIA, GAUTENG 0001

T: +27 (0) 12 315 8242 F: +27 (0) 12 323 0843

ROVOS RAIL CAPE TOWN

1 ADDERLEY ST, CAPE TOWN • PO BOX 50241 WATERFRONT, CAPE TOWN 8002

T: +27 (0) 21 421 4020/21 F: +27 (0) 21 421 4022

E: reservations@rovos.co.za

ST JAMES MANOR, SEAFORTH & HOMESTEAD

108 & 96 MAIN RD & 1 LEY RD, ST JAMES, CAPE TOWN 7945

T: +27 (0) 21 788 4543 F: +27 (0) 21 788 9590

E: guesthouses@rovos.co.za

www.rovos.com • www.stjamesguesthouses.com